

## Shipping Service Samples for PHP

This folder contains sample code for accessing Shipping services via the PHP cURL library. Samples are provided for these operations:

- CreateShipment
- GetArtifact (Shipment and Manifest)
- GetShipmentPrice
- VoidShipment
- GetShipment
- GetShipmentDetails
- GetShipmentReceipt
- GetGroups
- GetShipments (Shipment and Manifest)
- TransmitShipments
- GetManifest
- GetManifestDetails
- GetManifests
- GetCustomerInformation
- GetMoboCustomerInformation

### About These Samples

- These samples are meant to accompany the [Developer Program Getting Started Guide](#). They will help you validate that your Developer Program account is set up correctly, and will help you create your first Shipping request.

### Conventions

- **<install\_directory>** - This is the file folder where you have extracted these code samples into. Examples may include: CPCWS\_Java\_Samples; CPCWS\_DotNet\_Samples, or CPCWS\_Tracking\_PHP\_Samples among others.

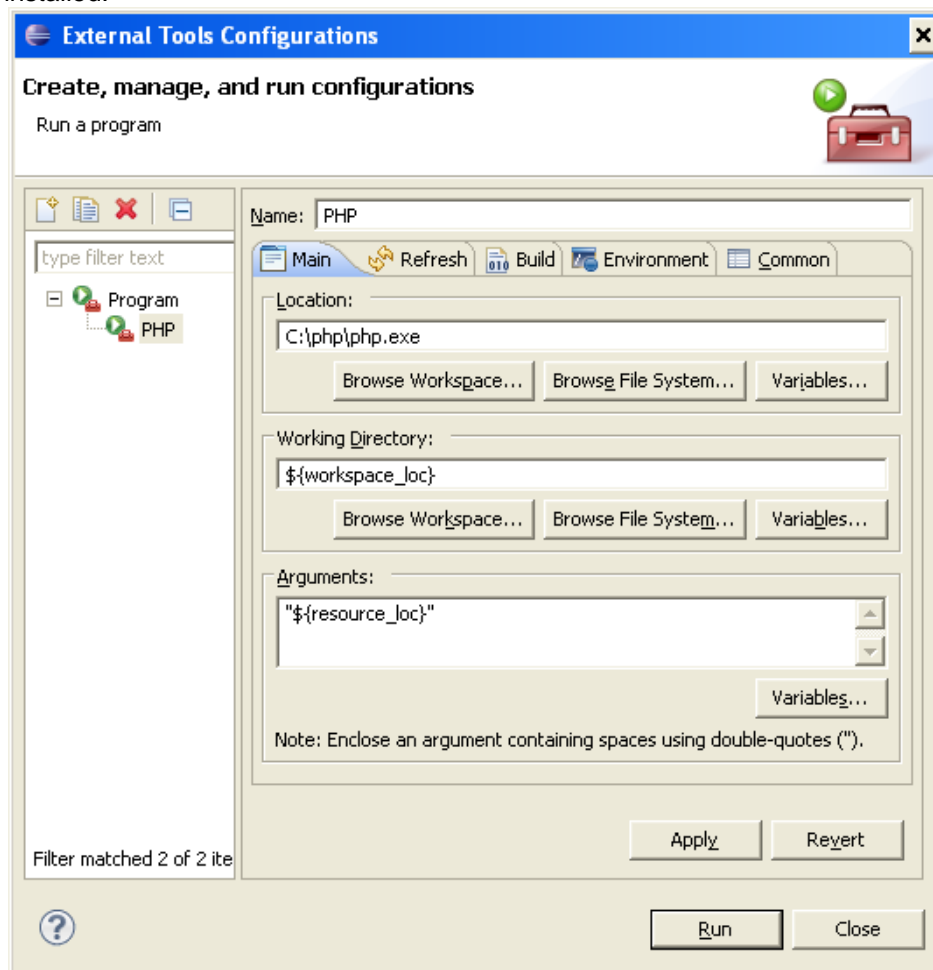
### Prerequisites

- You must have a valid Developer Program developer account.
- You must be signed up to use Developer Program.
- Requires PHP 5.2.10 or newer with cURL extension enabled in php.ini.
- Also requires Eclipse version 3.6 with PHP Development Tools (PDT) or newer.
  - Follow the instructions on the Eclipse website to install Eclipse. <http://www.eclipse.org/pdt/downloads/>

### Running the Samples

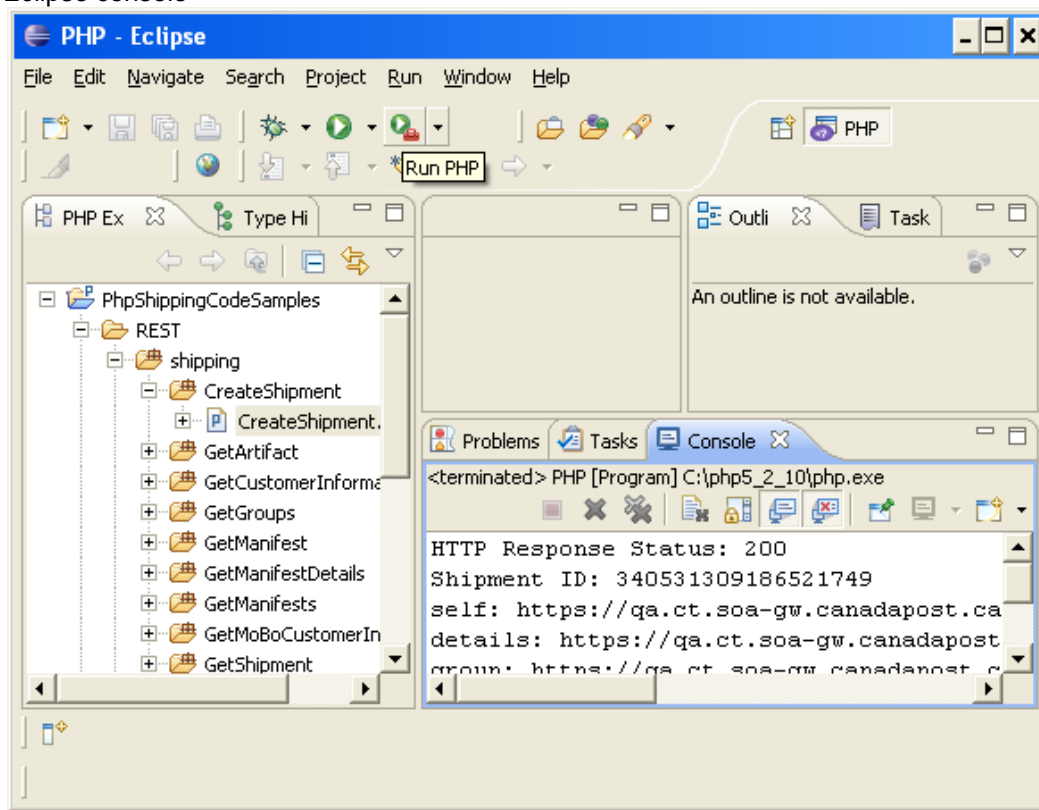
- 1) Configure Eclipse to be able to execute PHP CLI and display output to console.
  - a) From menu select **Run→External Tools→External Tools Configuration...**
  - b) Click on **Program**.
  - c) Click **New** button.

- d) Enter the following configuration and update **Location** to point to where your **php.exe** is installed.



- 2) Click **Apply** button then click **Close** button.
- 3) Import PHP Project from extracted samples package.
  - a) From the main menu bar, select **File → Import...**. The Import wizard opens.
  - b) Select **General > Existing Project into Workspace** and click **Next**.
  - c) Choose **Select root directory** and click the associated **Browse** to locate the directory of the extracted samples and select the **<install\_directory>** directory.
  - d) Under **Projects** select the project or projects which you would like to import.
  - e) Click **Finish** to start the import.
- 4) Edit **<install\_directory>\REST\shipping\user.ini** in the folder of extracted package.
  - a) Update this file with your Developer Program username, password and customer number.

- 5) Select **CreateShipment.php** file and Click on **External Tools** icon. View the output in the Eclipse console



- 6) Experiment with the other samples.